



Brightlands Chemelot Campus  
One in **safety**

# Be aware, Be self-reliant

Safety Week  
Brightlands Chemelot Campus

**SHE** / Brightlands Safety,  
Health & Environment



**Siren alarm:**  
**What you should know!**

# Siren alarm - what should you do?

The Chemelot site has several siren areas. **The campus is located in siren area 22.**  
Only building 124-037 is located in siren area 08.

When the siren alarm sounds, this means there is a major and immediate danger or threat of danger.

The siren alarm starts with a rising wailing tone for 3 seconds, followed by a descending wailing tone for 5 seconds. This continues for 70 seconds. An announcement made via the public announcement (PA) system will state which area the alarm relates to and what should be done. When the danger has passed, the safety signal will sound. This is a constant tone lasting for 70 seconds.

The announcements can be heard again by calling the following telephone number:  
+31 (0)46 47 68709.



# A siren alarm sounds on campus: What now?

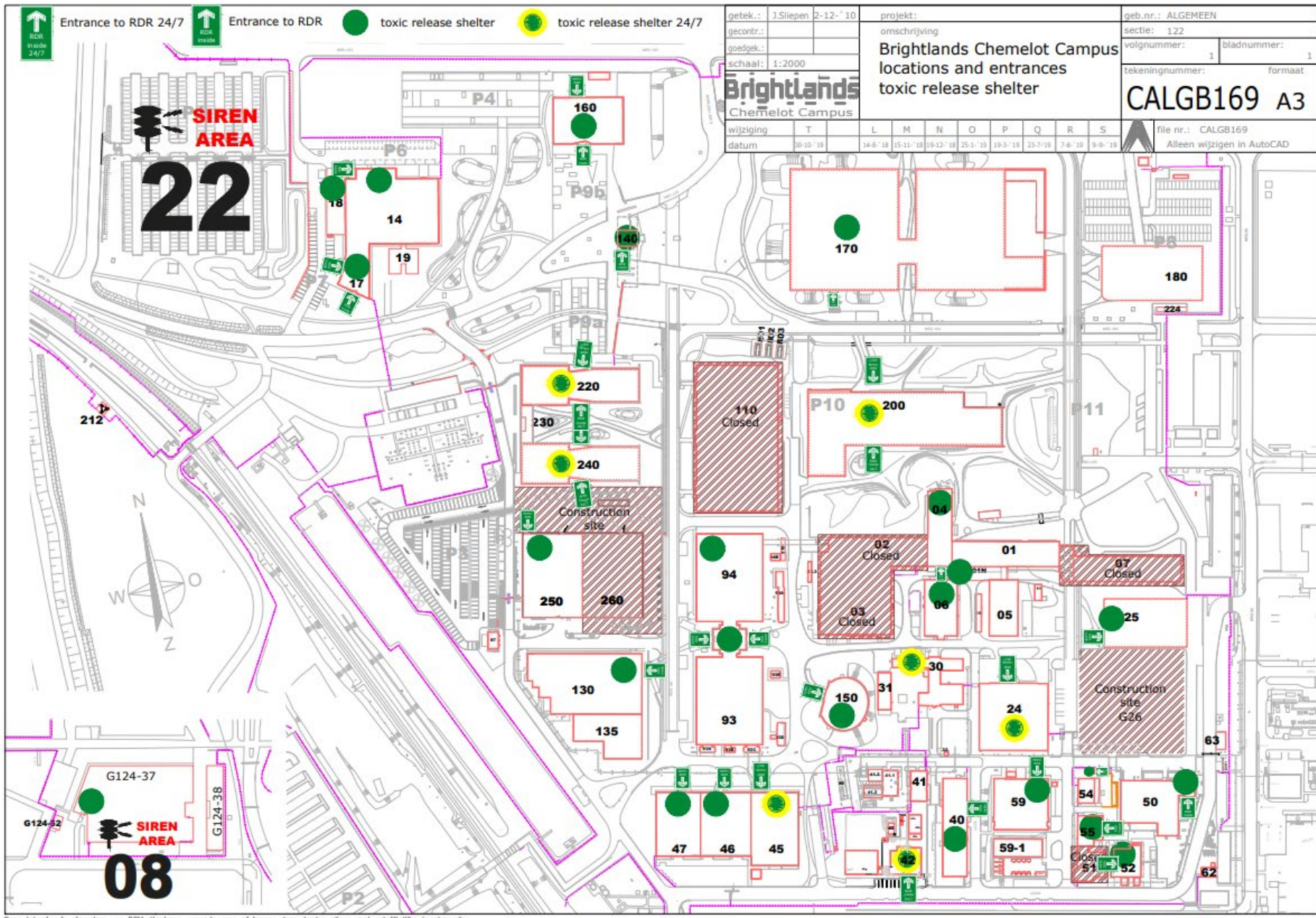
- Stop your work in a safe manner.
- If you are outdoors, enter a building immediately.
- Follow the signposting to a reasonably airtight room (RDR; toxic shelter).
- Enter the reasonably airtight room and shut all windows and doors.
- Switch off the ventilation using the stop button (if present).
- Follow the instructions given via the Public Announcement (PA) system and adhere to the arrangements for reporting and assembly that apply to your company or department.
- Remain in the reasonably airtight room (RDR) until you hear the 'all clear' signal or a spoken announcement to that effect via the PA system.
- Minimize your telephone usage.



# A **siren alarm** outside regular working hours

- Go to a building with the sign 'RDR inside 24/7'. If your badge does not give you access to that building, you can enter the 24/7 RDR by pushing the emergency button outside the door/sliding doors.
- Enter the reasonably airtight room (RDR) and shut all windows and doors.
- Switch off the ventilation using the stop button (if present).
- Follow the instructions given via the Public Announcement (PA) system and adhere to the arrangements for reporting and assembly that apply to your company or department.
- Remain in the reasonably airtight room (RDR) until you hear the 'all clear' signal or a spoken announcement to that effect via the Public Announcement (PA) system.
- Minimize your telephone usage.

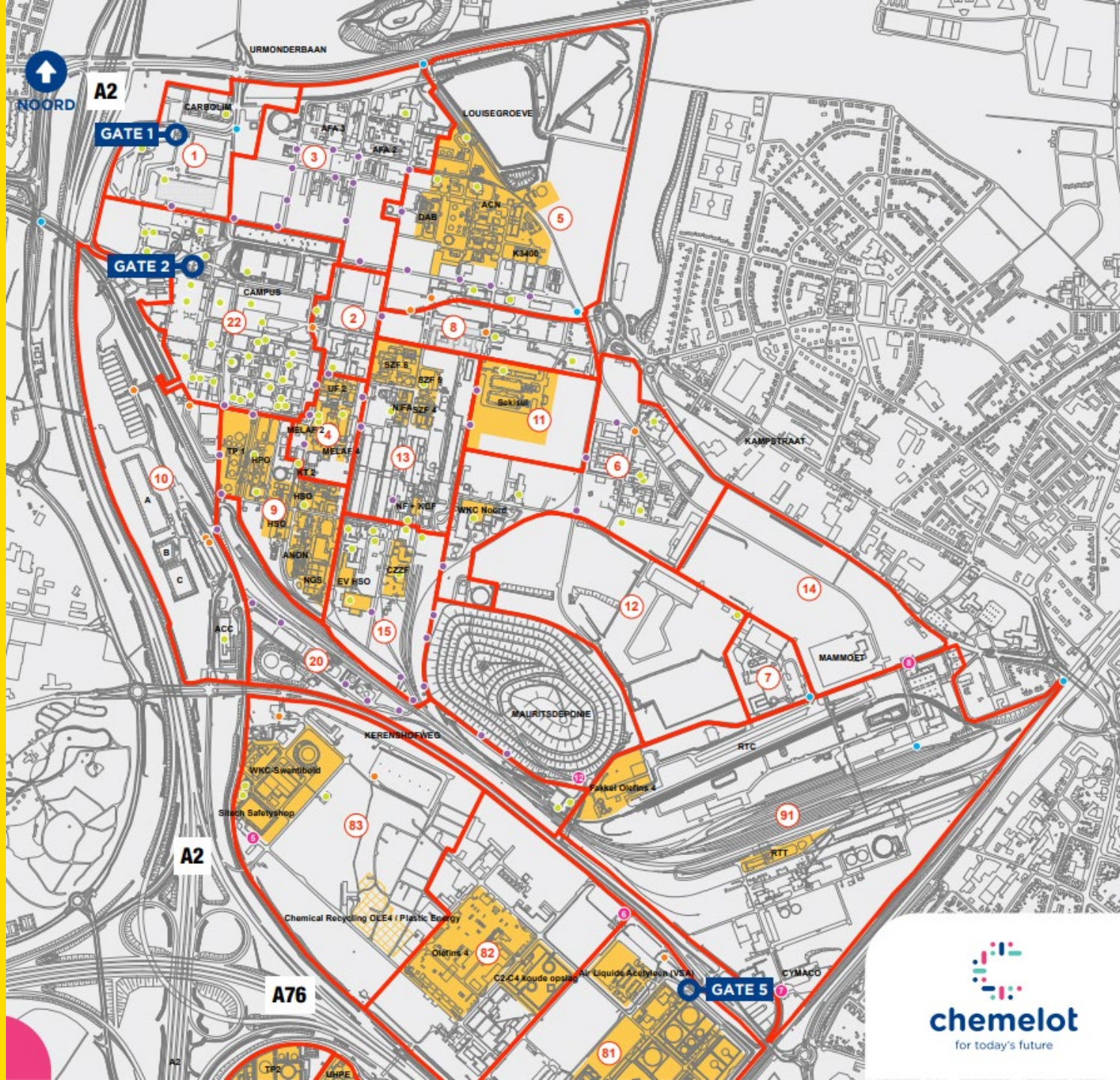




Map showing the **siren alarm** areas and reasonably airtight rooms (RDR's) / toxic shelters

Brightlands

Deze tekening is eigendom van DSM. Kopieren, reproduceren of inzage door derden alleen met schriftelijke toestemming.



Map showing the **siren areas** around the campus.

# The **siren alarm** sounds when you are in the car park or moving from one location to another

## If you are at a car park on campus:

- Get into your car, close the windows, and shut off the ventilation.
- Drive away from the campus. During a siren alarm, you can exit the campus via the crossing gates.

## If you are on your way to the campus or have just arrived:

- Drive away from the campus.
- Follow the yellow 'alarm' diversion signs.





# Chemelot Site Alert App

The Chemelot Site Alert app is intended for everyone who has access to the Chemelot site - including the Brightlands Chemelot Campus - by means of a personal access pass. If you are present on the Chemelot site and a Claxon or Siren alarm or a safe signal is given at Chemelot, you will receive a notification on your smartphone via the new app.



## What do you need to do to install this application on your smartphone?

1. You need to register via 'registration Chemelot Site alert' in the registration and access system (AEOS) as a user of this app.  
<https://sitechservices.pleaselogin.nl/sitech/crisismaster>
2. Via the App store (iOS) or Play Store (Android), install the "Chemelot Site Alert" app on your smartphone.
3. To activate the app on your smartphone, you need to sign in using your mobile phone number. You will receive a password via a text message (SMS).

If you encounter any problems and/or have any questions regarding the installation of the Chemelot Site Alert app, you can contact the Sitech IT Servicedesk by calling **+31 (0)46 70 2 2222** and/or by sending an e-mail to **sitech.servicedesk@valid.nl**.





**Extra Information**  
**Evacuation:**  
**What you should know!**

# Evacuation - what should you do?

Everybody on campus is permitted to initiate a limited/local evacuation if necessary. The reason for the evacuation (a hazardous situation, an accident or incident, etc.) should be reported as soon as possible to:

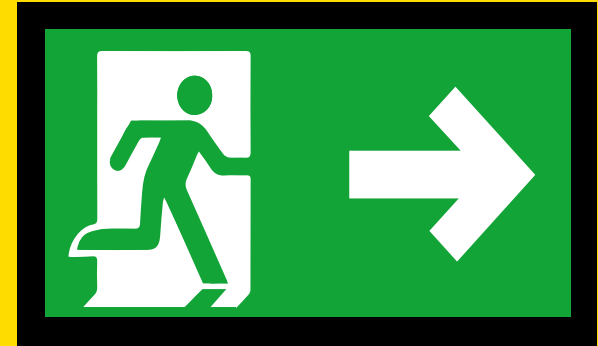
- the Central Incident Room by calling the alarm number **+31 (0)46 47 66666**;
- your local supervisor;
- the Duty Officer by calling **+31 (0)46 47 64444** or **+31 (0)6 22 90 4304**.

Evacuations of a building, for example, are announced via the Public Announcement (PA) system.

A spoken message is used to announce an evacuation.

# An **evacuation** of a building / location on campus: What now?

- Always obey the order to evacuate the building/location where you are currently present.
- Stop your work in a safe manner.
- Always use the nearest emergency exit to leave the building.
- Take measures to prevent people from re-entering the evacuated building.



# An **evacuation** of a building / location on campus:

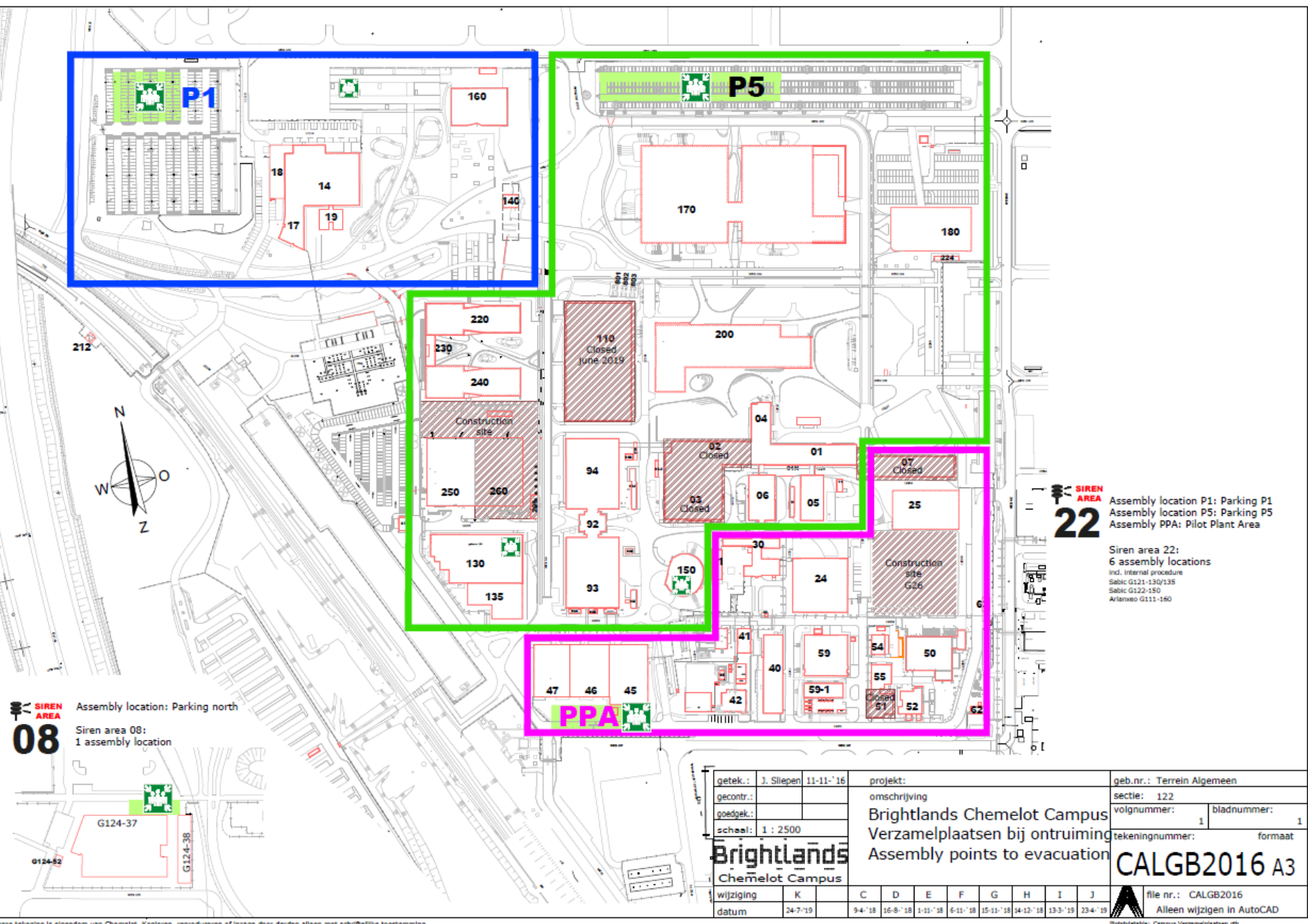


- Follow the instructions given via the PA system and by the emergency response team.



- Go to the designated assembly point for the building you are in. Follow the instructions about the escape route to be taken to reach the assembly location.

# Map showing the assembly points on campus



Brightlands

Deze tekening is eigendom van Chemelot. Kopieren, reproduceren of inzage door derden alleen met schriftelijke toestemming.

# The assembly points: P1, P5, PPA



Brightlands  
squares

# During the **evacuation**

The local supervisor ensures arrangements within the company or department are adhered to regarding:

- the securing of equipment during an evacuation
- who should take the lead in the event of a limited local evacuation
- assembly location checks and/or floor sweeping

## **Missing persons**

The local supervisor acts as an assembly leader and will determine whether anyone is missing.

A person is considered missing if there are reasons to believe that he/she is currently still in the building/location that is being evacuated. Suspected missing persons are reported to the Duty Officer by calling +31 (0)46 47 64444 or +31 (0)6 2 29 04304. If it becomes clear that persons who were reported as missing are safe, then the assembly leader will cancel the missing person's report.





## More information?

<https://community.brightlands.com/safety/>